



**No Magic, Inc**

# Technical Overview



**Accelerating the Model Driven Enterprise**



# Ten Ways MagicDraw Accelerates

## 1 Promotes quick learning with intuitive interface

Easy access to the most common operations is a cornerstone of MagicDraw's user interface. Because all major comments are reachable through a single click, you can focus on modeling. Choose your favorite one-click method: standard menus, context menus, shortcuts, or toolbars. With MagicDraw you can complete your tasks in half the steps required by other tools.

**“MagicDraw provides intuitive controls within a very well designed GUI, which allows the user to get on with design without having to spend time learning where all the controls are.”**

*Geoff Armstrong, Technology Manager*

## 2 Creates diagrams faster than any tool on the market

Our features include: on-diagram editing, automatic completion of attributes, operations, and parameters type, pick lists for types and names. With features like these, you'll find MagicDraw indispensable as you work more rapidly than ever before. The unique Smart Manipulators feature makes for high-velocity diagram creation and editing. And since MagicDraw's automatic UML semantics checking and model validation facilitate the creation of valid models, you won't waste valuable time correcting improper UML.

## 3 Derives models from existing source code in just seconds

MagicDraw's reverse engineering is the fastest way to get UML models from Java, C#, C++, CORBA IDL, EJB 2.0, DDL, CIL (MSIL), WSDL, and XML Schema source code. Our automatic generation of sequence diagrams from Java source code adds a more detailed view of the system.

**“I tried a few things with MagicDraw, like reverse engineering the JDK, and it was astounding. It took less than 15 seconds, whereas Poseidon would simply crash and Rational Rose would take about 2 hours. How did you make it so fast?”**

*Barry M. Caceres*

## 4 Visualizes your model in a few quick steps

MagicDraw's automatic generation of static structure, package dependency, and hierarchy diagrams allows multiple views of the same model. Users can automatically generate hierarchy diagrams in a few seconds, compared to the hours required to do the same work manually. Our Dependency Matrix provides an optimal means to view models with a large number of relationships.

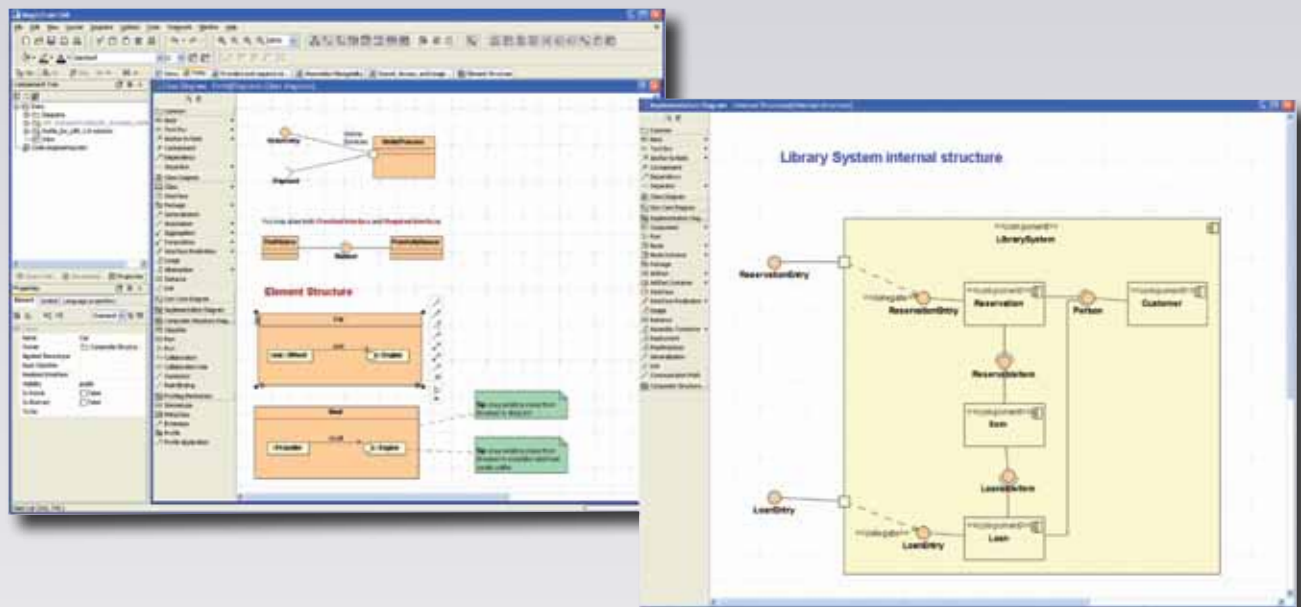
## 5 Accelerate team collaboration, saving time and money

Using MagicDraw's Teamwork Server, multiple developers can work simultaneously on the same model. Our locking is the most granular in the industry, allowing even a single element to be locked. This accelerates your team's collaboration while providing simple configuration management, controlled access to all your artifacts, and remote access to your model. It's the optimal way to manage your model and avoid version conflicts.

## MagicDraw RConverter – The easiest way to move Rose files to UML 2 and correct the XMI

The MagicDraw RConverter provides a seamless way to convert Rational Rose Model file format (\*.mdl) to MagicDraw-supported file format (\*.xml). The RConverter will facilitate the conversion of any size Rational Rose Model file, thus getting around the export limitations of Rational Rose. It has been the case that Rational Rose would not work when models reached a certain file size, thus locking users into Rational Rose. RConverter will also correct 90%-95% of the improper XMI generated by Rational Rose in XMI 1.x. Simply load the newly created XMI 1.x file into the latest MagicDraw version, save it, and the file will be UML 2.

Rational Rose users are challenged by proprietary and poorly supported export utilities. The MagicDraw RConverter from Rose model generates the standard XMI file. This enables developers to export Rational Rose models to MagicDraw UML and to MDA solutions from third parties. RConverter drives more value from model assets and provides an easy way to transition away from Rational Rose and its related SDLC solution.



MagicDraw is very intuitive and robust.  
The best UML Modeler I've been using so far.  
And I had to work with almost every utility in the market.

MagicDraw is exactly what you need if you simply can't afford a utility breakdown.

**Keep up this great work!**

*VOLKER LENZ, IT Services Promotion Agency*

MagicDraw UML is an excellent modeling tool. It has all the functionality (and more) of tools costing considerably more. We were very pleased with its ease of use and thorough implementation of UML.

We are very happy with it, and so is our CFO!

*MIKE WOODWARD, Product Manager*



# Application Areas

## Business Process Modeling

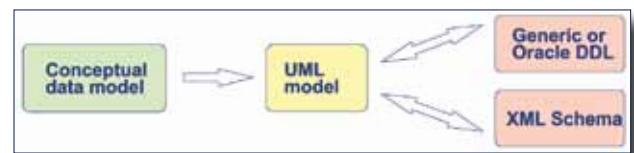
Business Process Modeling Notation (BPMN) is the most recognized standard employed by business users for end-to-end business process modeling. MagicDraw provides business process modeling support with BPMN implementation. With its business-oriented notation support, MagicDraw is ideal for both business users and IT users, saving time while solving model interchange problems.

MagicDraw is an optimal platform for a UML standards-based approach to Enterprise Architecture. With the DoDAF/UPDM plugin, MagicDraw can be a central repository for DoDAF/UPDM based project documentation. All DoDAF/UPDM products are integrated within an underlying model, creating true Integrated Architecture for managers, architects, developers, and others.

## Data Modeling – Won JDJ Best Database Development Tool Award

With MagicDraw UML, users can integrate their data models with business and OO models. UML profile for DDL enables mapping of rational concepts to UML elements. MagicDraw gives users a tool for generating and reversing DDL Scripts, and retrieving Database Structure (Schema) via JDBC.

Another data modeling tool feature allows model transformations in both directions: from Platform Independent Model (PIM) to Platform Specific Model (PSM) and from PSM to PIM.

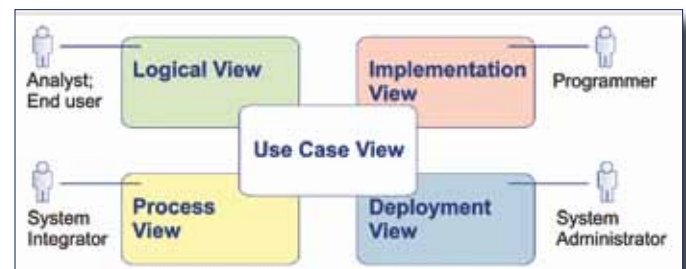


## System Modeling

MagicDraw supports Systems Modeling Language (SysML) for standards-based system engineering, and does so as a separate extension product, the SysML plugin. The SysML plugin supports all SysML diagrams, including Requirements, Block Definition, Internal Blocks, Parametric, and other UML diagrams reused by SysML.

## Software Modeling

MagicDraw provides full support for UML 2 metamodel, including class, use case, communication, sequence, state, activity, implementation, package, component, composite structure, and deployment diagrams. In addition, MagicDraw provides explicit support for UML profiles and custom diagrams. MagicDraw has consistently been the most compliant to the UML Standard. When organizations think of BPMN, UML, and Standard Compliance, they think of MagicDraw. This is why many companies partner, integrate, or OEM MagicDraw. In addition, MagicDraw provides a means for architectural view modeling, to define system and software architecture in all 4+1 views, and at different abstraction levels.



# the Model Driven Enterprise

## 6 Instantly delivers source code from your UML model

MagicDraw UML generates code for Java, EJB, C#, C++, CORBA IDL, DDL, WSDL, and XML Schema. Integrations with the most popular IDEs (Eclipse, IBM RAD, CodeGear JBuilder, IntelliJ IDEA, NetBeans) eliminate the need for a native MagicDraw IDE. Whether you are using MagicDraw as a standalone application or integrating with an IDE, you have the option for round-trip engineering to keep models and code synchronized. MagicDraw allows you to go further with code generation, and is the tool of choice in the Model Driven Enterprise. MagicDraw integrates with Compuware OptimalJ, Interactive Objects ArcStyler, AndroMDA, and other MDA tools, thus it doesn't lock you into the "IDE Box."

## 7 Eliminates document preparation time and cost with automatic report generation

Use MagicDraw's automatic report generation engine to quickly produce comprehensive, professional requirements, software design documentation, and other types of reports in HTML and RTF formats. MagicDraw UML generates standard artifacts that match your software development process. MagicDraw Report Wizard allows you to generate up-to-date reports based on your own templates with layout and formatting specified. This MagicDraw feature alone can save as much as 30% to 50% of your total project lifecycle costs.

## 8 Extends UML capabilities beyond UML 2

UML profiles and custom diagrams allow you to extend standard UML to fit your specific problem domain. You can quickly create custom diagrams that fit your software development process. Define your own custom toolbar for stereotyped element creation – you'll instantly accelerate your modeling effort. With the Domain Specific Language Customization Engine, MagicDraw is the only modeling tool on the market with conversion capability from a generic UML-based application into a domain-specific modeling tool. No Magic provides custom add-ons to meet your specific needs.

## 9 Accelerates time between modeling domains

With model transformations available in MagicDraw you can quickly go back and forth from one modeling domain to another. MagicDraw UML allows model transformations both ways: from Platform Independent Model (PIM) to Platform Specific Model (PSM) and from PSM to PIM. With model transformations, you can produce models, such as XML Schema or DDL, or customize specific models from a generic one.

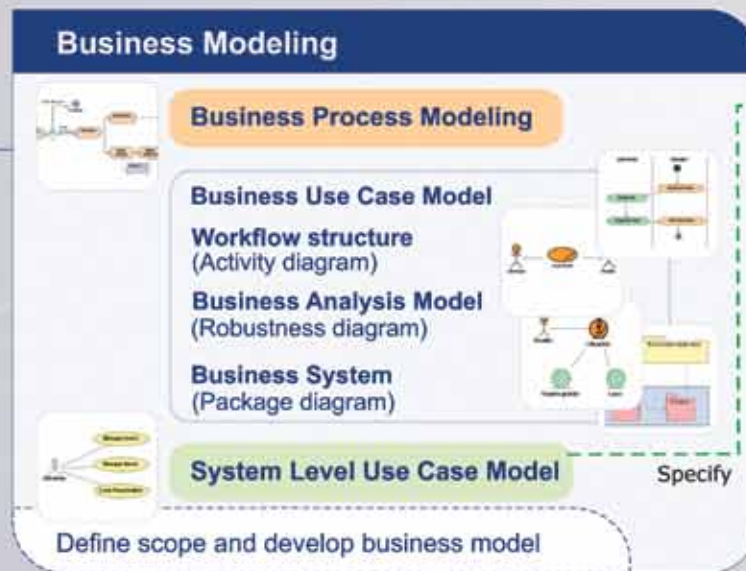
## 10 Enables rapid model navigation

With MagicDraw hyperlinks, you can link to any model element, to elements in other diagrams, different models, and files, or to documents outside the model. This easy-to-use functionality allows you to customize model navigation to your specific needs. Use the Content Diagram for creating an overview of the content of your project diagrams in a single location. The Content Diagram was developed to give you a complete overview of your project and let you quickly navigate anywhere in your project file.

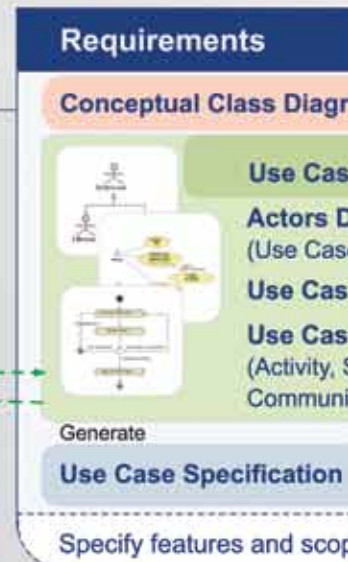
# Using MagicDraw UML in your software development



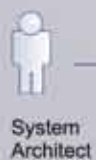
Business Analyst



System Analyst



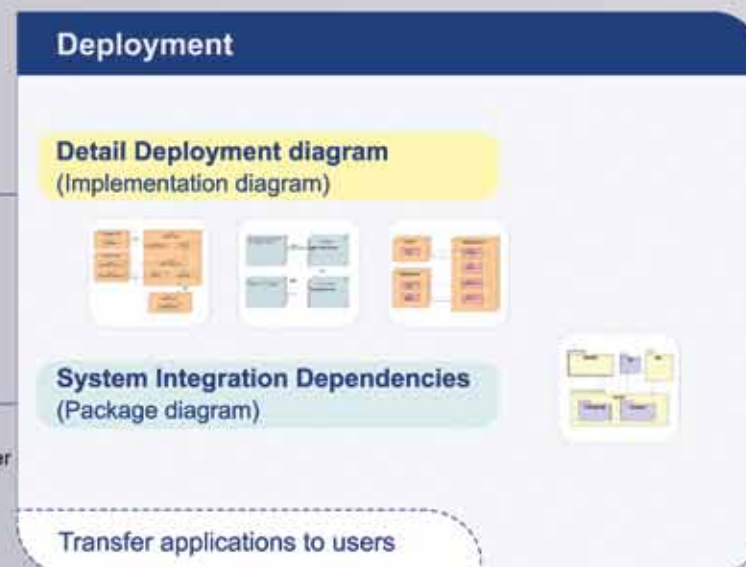
Test



System Architect

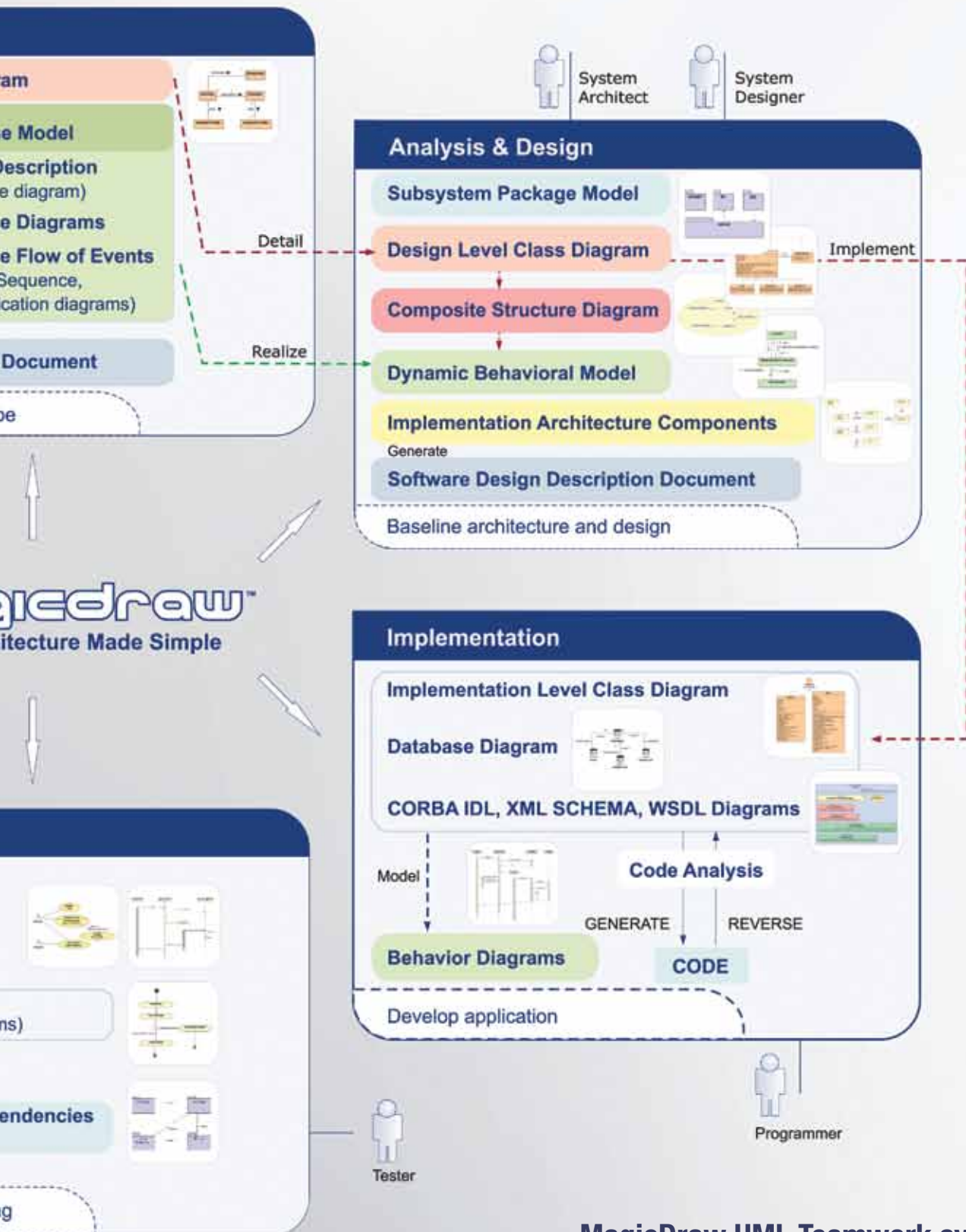


Programmer





# Development process



**MagicDraw UML Teamwork system – reliable way to keep your design artifacts in sync!**



Jolt Productivity  
Award Winner in  
Design Tool Category



Best  
Database  
Tool



Jolt Productivity  
Award Winner in  
Design Tool Category



Best Java  
Modeling Tool



Best Team  
Development Tool

## Partial List of Clients

### AEROSPACE, DEFENSE

- BAE Systems
- Boeing
- Computer Sciences Corporation (CSC)
- Cubic Defense Applications
- Lockheed Martin
- LTU Lufttransport Unternehmen
- Northrop Grumman
- Raytheon
- Science Applications International Corporation (SAIC)
- Sandia National Laboratories
- Teledyne Brown Engineering
- The Aerospace Corporation

### CONSUMER GOODS

- COPA
- ITELLIUM Systems & Services
- NuSkin

### INFORMATION TECHNOLOGY

- BEA Systems
- Business Objects
- Digital Steps Limited
- Google
- IBM
- InterComponentWare AG
- JBoss
- Multi-Support
- Saab Communications
- Saguaro Technology
- Sopra Group
- Sun Microsystems
- Trigent Software
- VERMEG

### ELECTRONICS

- ABB
- Cisco Systems, Inc.
- General Electric
- Hewlett-Packard
- Hitachi
- Samsung Electronics Research Institute
- Siemens AG
- Xerox

### TELECOMMUNICATIONS

- AOL
- Avaya
- Cisco
- Covad Communications
- DNA Finland Oy
- Eurotel Praha
- Teligent AB
- Verizon Wireless

### EDUCATION

- British Columbia University
- Indiana University
- Massachusetts Institute of Technology (MIT)
- The University of Texas

### FINANCIAL (BANKS, INSURANCE)

- Association for Cooperative Operations Research and Development (ACORD)
- AIG United Guaranty
- Bancoval
- Bank of America
- Banque COVEFI
- Barclays Global Investors
- Bloomberg
- Citigroup
- CitiMortgage
- CNP Assurances
- Credit Suisse
- FinanzIT GmbH
- Ford
- GMAC BANK
- Lincoln Financial Group
- Mia Software
- Nykredit Data
- Ontario Systems
- PricewaterhouseCoopers
- Prima-solutions
- Reuters
- Royal Bank of Canada
- Safeco Insurance
- Thompson Financial
- Textron Financial Corp.

### OIL/ENERGY

- Constellation Energy
- Duke Energy
- DynMcDermott Petroleum Ops. Co.
- EDF Energy
- National Grid
- New Energy Associates
- Shell Canada Limited
- Stirling Energy Systems

### TRANSPORT, LOGISTICS

- BMW Group
- DaimlerChrysler
- De Post - La Poste
- DHL
- Expeditors International
- Port Infolink B.V.
- Salomon Automation
- Volkswagen AG

### GOVERNMENT

- Australia Department of Defence
- Australian Securities & Investments Commission
- Bayerisches Landesamt für Steuern
- Canadian Ministry of Government Services
- Federal Reserve Bank
- Jet Propulsion Laboratory (JPL)
- Lantmäteriet
- Los Alamos National Laboratory
- National Aeronautics and Space Administration (NASA)
- National Institutes of Health (NIH)
- National Institute of Standards and Technology (NIST)
- Naval Research Laboratory
- Sandia National Laboratories
- State Information Technology Agency (SITA)
- State of New Jersey, Office of IT
- U.S. Securities and Exchange Commission
- U.S. Department of Defense (DoD)
- U.S. Department of Energy

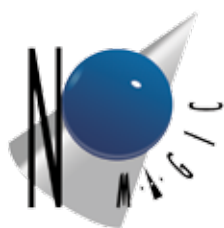
### HEALTHCARE, PHARMACEUTICALS

- Bear Creek Corporation
- Electronic Healthcare Systems
- GE Healthcare
- Health Market Science
- LION bioscience AG
- VSA GmbH



**No Magic, Inc.**

**www.magicdraw.com**



*The Truth is in the Models™*

**www.nomagic.com**

Copyright © 2012 No Magic, Inc. MagicDraw is a registered trademark of No Magic, Inc.  
UML logo is a registered trademark of the Object Management Group, Inc. in the United States and other countries.

#### Corporate Headquarters

One Allen Center  
700 Central Expressway South,  
Suite 110  
Allen, Texas 75013  
Phone: 214.291.9100  
Fax: 214.291.9099  
E-mail: sales@nomagic.com

#### No Magic Europe, UAB

Savanoriu ave. 363  
LT-49425  
Kaunas, Lithuania  
Phone: +370 37 324 032  
Fax: +370 37 320 670  
E-mail: sales@nomagic.com

#### No Magic Asia

719 KPN Tower, 22nd floor,  
Rama IX Road, Bangkok, Huaykwang,  
Bangkok 10310, Thailand  
Phone: +66 2717 0250  
Fax: +66 2717 0251  
E-mail: nomagicth@nomagicasia.com